



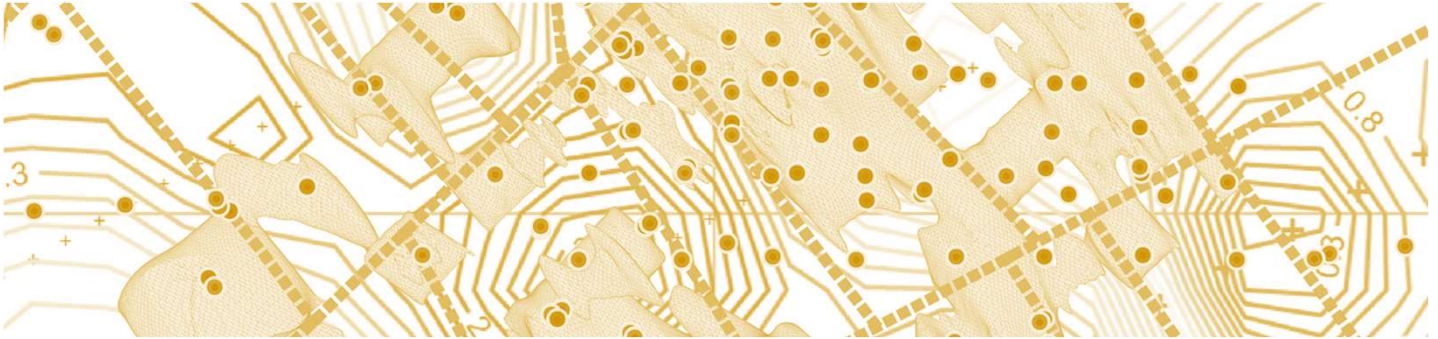
MOTHERLODE
CONSULTING

TECHNICAL SERVICES FOR THE MINERAL INDUSTRY



www.motherlodeconsulting.com

COMPANY OVERVIEW



Motherlode Consulting Inc is a consultancy based in Vancouver, Canada that provides technical services to clients from the metals & mining industry.

Our mission is to help companies achieving results through analyzing and presenting their geological data to investors.

Our expertise relies on having a cost-efficient and holistic approach for managing, analyzing and presenting the data of mineral projects. Our core value is on generating meaningful implicit geological models that serve as the foundation for our clients corporate graphic material, including communicating exploration targets, drill intercepts and mineral resources.

Our team is composed by two principal geoscientists with graduate degrees in economic and structural geology.

THE TEAM



Antonio Celis



[/in/antoniocelis/](#)



Economic geologist with relevant experience in mineral exploration throughout the Americas, including porphyry Au-Cu deposits in Western Canada, porphyry Cu-Mo in Northern Chile and epithermal Au-Ag vein deposits in Central Chile. Strong suits in geological & resource modelling, ArcGIS/QGIS mapping, data management and technical reporting of mineral projects.

M.Sc. in Geological Sciences from the University of British Columbia, Canada and Professional Geoscientist (P.Geo) with Engineers & Geoscientist Association of British Columbia, Canada.

Sebastián Perroud



[/in/sperroudr/](#)



Economic structural geologist, with five years of experience in consulting and exploration in different type of deposits, such as Cu-Au porphyries, L-I epithermal, polymetallic veins, carlin and stratabound copper deposits.

M.Sc. in structural geology from the University of Chile, specializing in active fault systems and certificates in "Ore Deposits Models and Exploration Strategies" and "Structural Controls on Fluid Flow and Mineralization in Hydrothermal Systems" from the University of Tasmania.



CORPORATE GRAPHIC CONTENT

- ❖ Graphic material (i.e., maps, sections, etc.) to support corporate communication of listed companies from the mineral sector.

DATA MANAGEMENT, CLOUD STORAGE AND GIS

- ❖ Management and cloud storage of data bases of mineral projects, including setting and managing GIS project databases.

GEOLOGICAL MODELLING & STRUCTURAL ANALYSIS

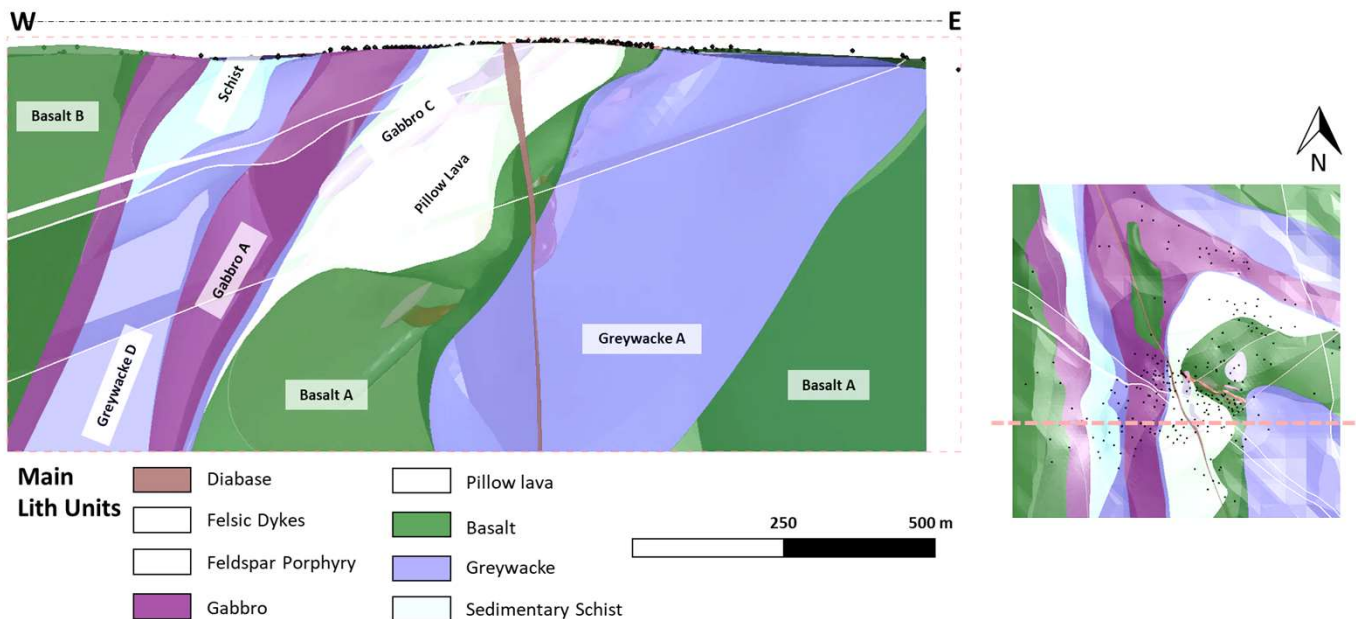
- ❖ Advanced geological modelling, geometallurgical modelling and structural analysis.

RESOURCE ESTIMATION

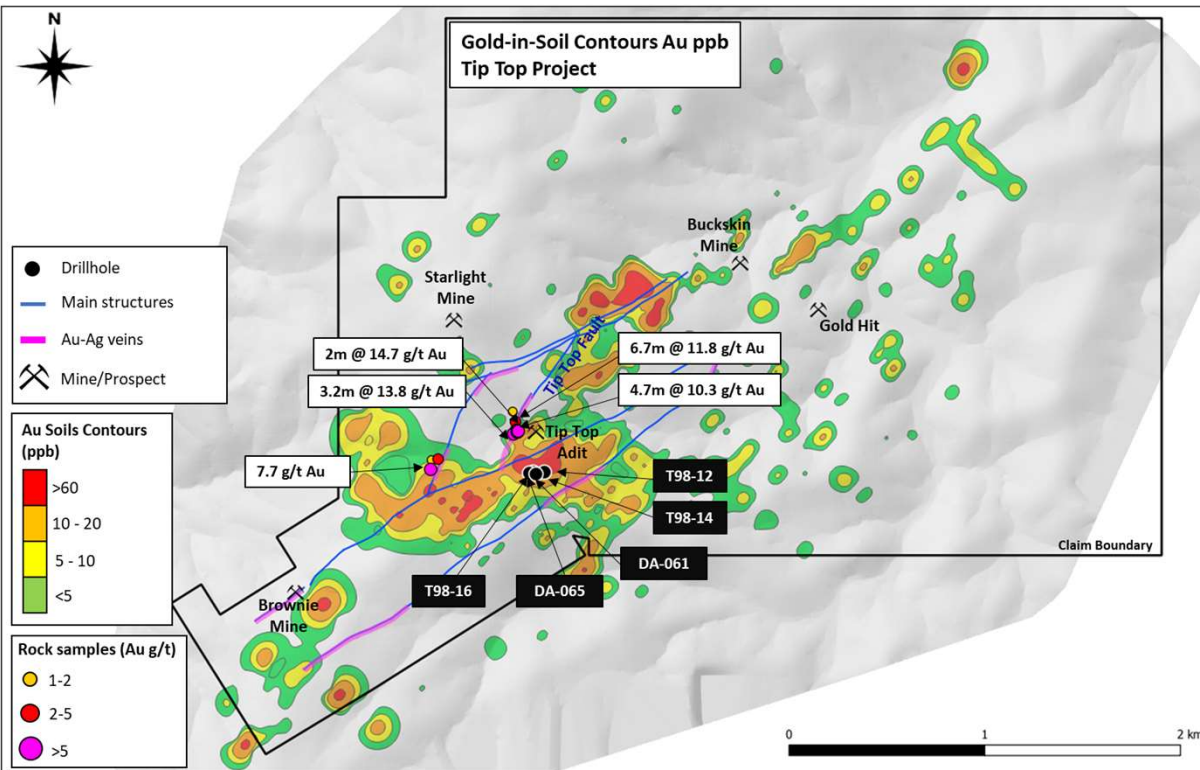
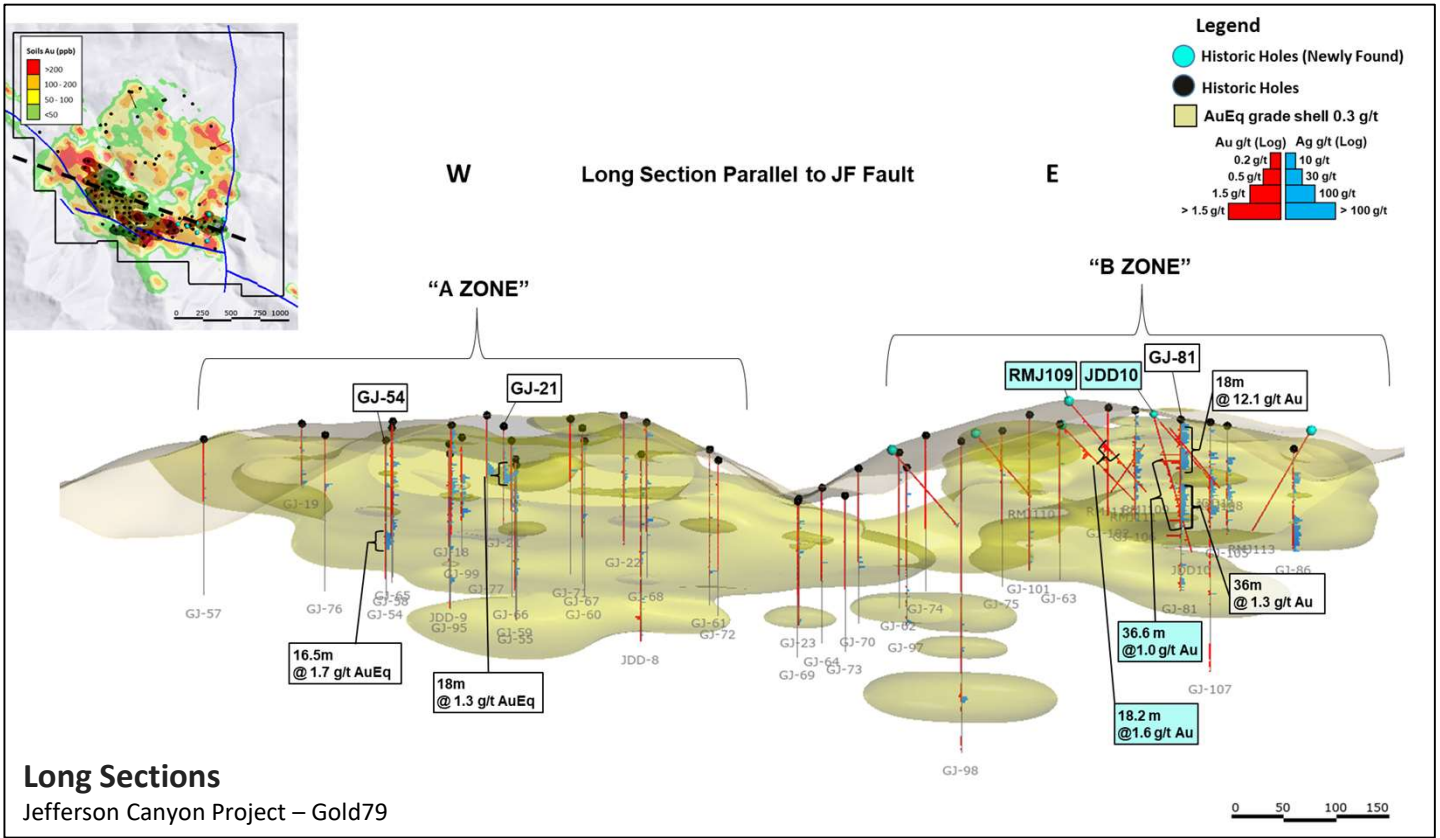
- ❖ Resource modelling and estimation; CIM-compliant.

FIELD SERVICES

- ❖ Core logging & relogging. Geological and structural mapping, prospecting and geochemical surveying.

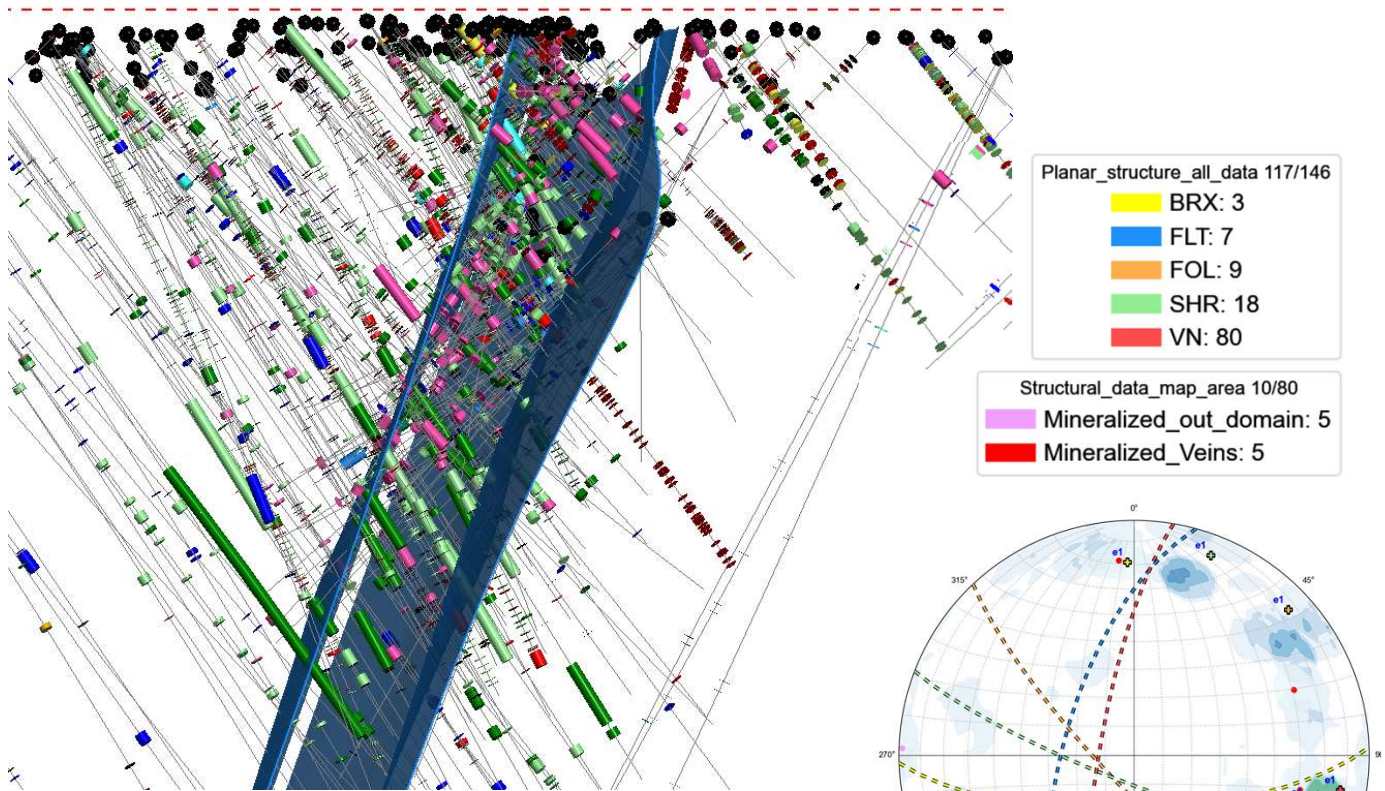


CORPORATE GRAPHIC CONTENT



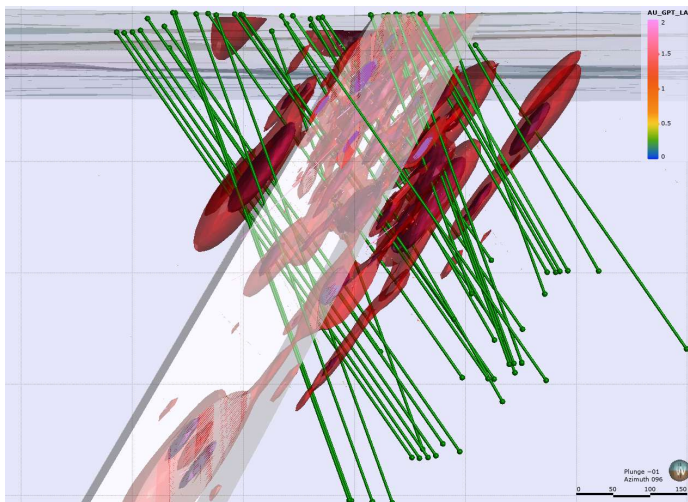
Geochemical Mapping

Tip top Project – Gold79



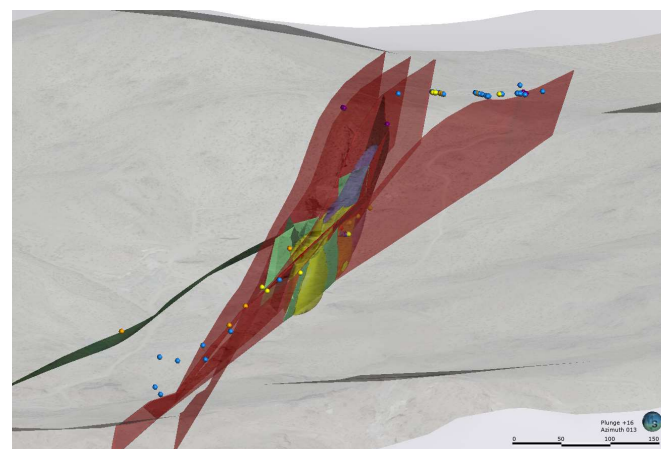
Structural analysis and modelling

Ulu Project – Blue Star Gold



Ore domaining and drillhole planning

Destiny Project – Clarity Gold Corp



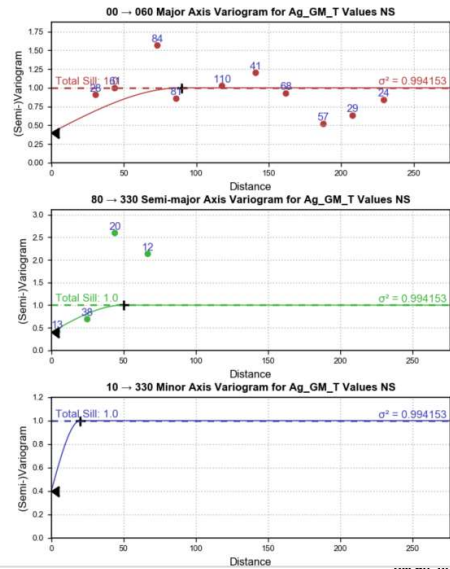
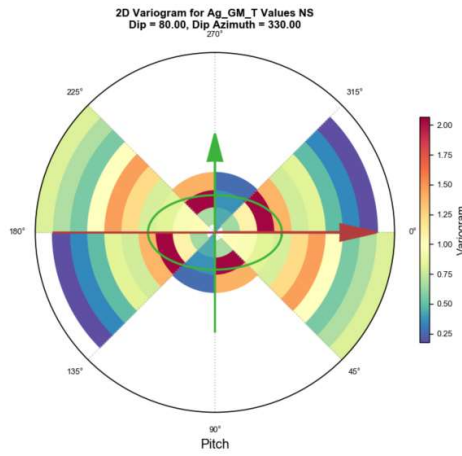
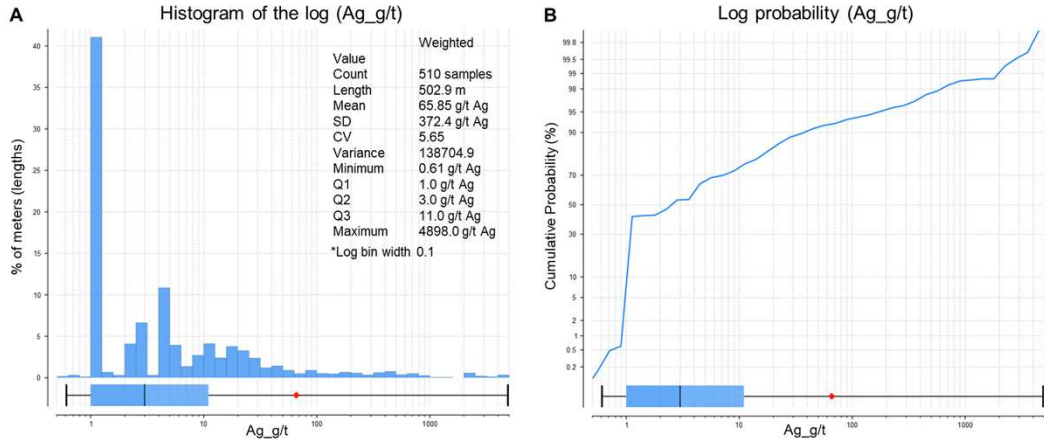
Vein modelling

Goldchain Project – Gold79

RESOURCE ESTIMATION

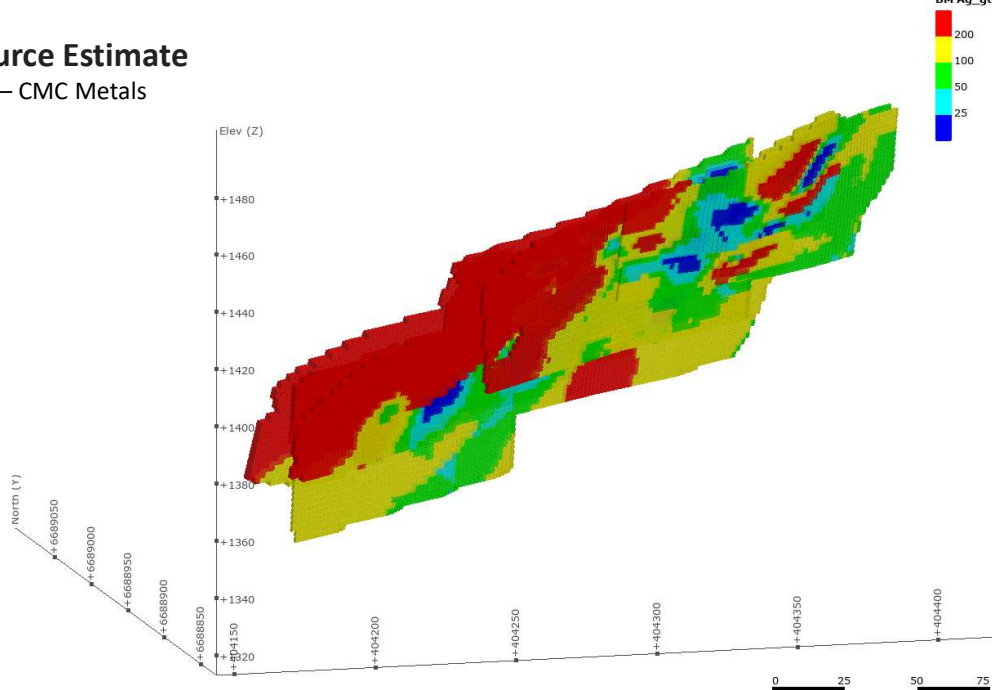


TM Zone Exploratory Data Analysis (EDA) – Silver (Ag)



Mineral Resource Estimate

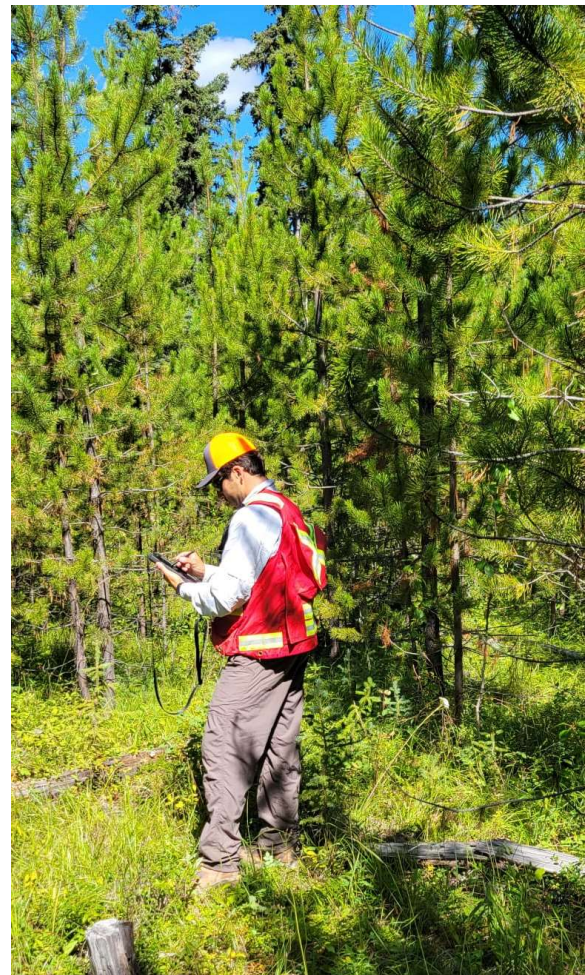
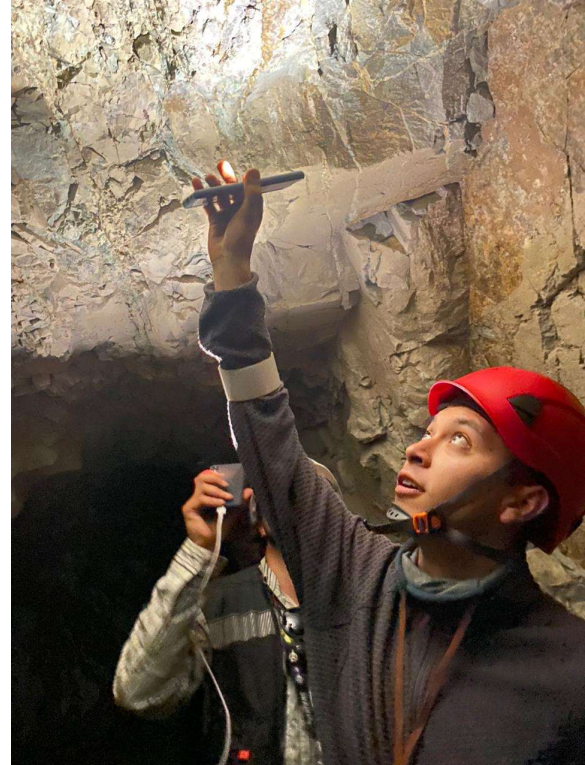
Silver Hart Project – CMC Metals

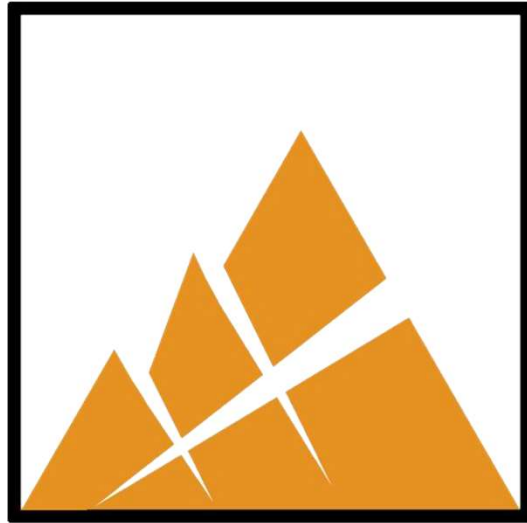


FIELD SERVICES



- ❖ Drone-based aerophotogrametry
- ❖ Field and underground mapping
- ❖ Core logging
- ❖ Prospecting and geochemical surveying





MOTHERLODE

CONSULTING

TECHNICAL SERVICES FOR THE MINERAL INDUSTRY

Vancouver, Canada – Santiago, Chile
www.motherlodeconsulting.com